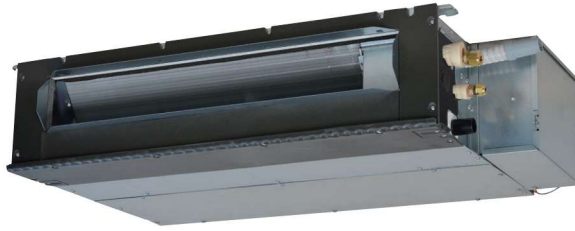




SINGLE-SPLIT CEILING CONCEALED TYPE

SRR-ZS

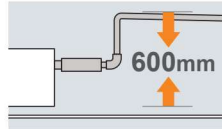


SRR25ZS-W, SRR35ZS-W

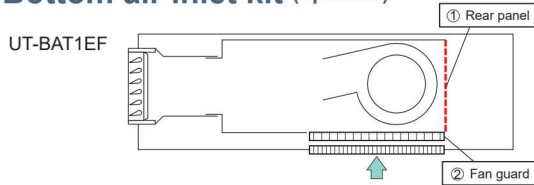


Enhanced Installation Workability

600mm Drain Pump is mounted in all models. The indoor unit is completely hidden in the ceiling, so this is suitable for spaces with classy interior decoration.



Bottom air inlet kit (optional)



KEY FEATURES

- The SRR series' indoor unit is concealed under the ceiling and is perfect a for a living room or bedroom area.
- Thin design, the height of SRR models is only 200mm.
- Low Global Warming Potential (GWP) and High energy efficiency by new refrigerant R32.
- Quiet Operation
- Low Static Pressure Level (35Pa)

SPECIFICATIONS

| Indoor unit | | | SRR25ZS-W | SRR35ZS-W |
|--|-----------------|-------------------------|---|------------------------|
| Outdoor unit | | | SRC25ZS-W2 | SRC35ZS-W2 |
| Power source | | | 1 Phase, 220 - 240V, 50Hz | |
| Nominal cooling capacity (Min~Max) | | kW | 2.5 (0.9 ~ 3.2) | 3.5 (0.9 ~ 4.1) |
| Nominal heating capacity (Min~Max) | | kW | 2.9 (0.9 ~ 4.4) | 4.2 (1.0 ~ 5.2) |
| Power consumption | Cooling/Heating | kW | 0.62 / 0.65 | 0.93 / 1.01 |
| | Cooling/Heating | | 4.03 / 4.46 | 3.76 / 4.16 |
| EER/COP | | | | |
| Max. running current | | A | 9 | 9 |
| Sound power level | Indoor | Cooling/Heating | 56 / 59 | 57 / 60 |
| | Outdoor | Cooling/Heating | 58 / 58 | 62 / 62 |
| Sound pressure level | Indoor | Cooling (Hi/Me/Lo/Ulo) | 37 / 33 / 30 / 24 | 38 / 34 / 31 / 25 |
| | | Heating (Hi/Me/Lo/Ulo) | 40 / 37 / 34 / 28 | 42 / 38 / 35 / 29 |
| | Outdoor | Cooling/Heating | 47 / 47 | 50 / 50 |
| | | Cooling (Hi/Me/Lo/Ulo) | 9.5 / 8.0 / 6.5 / 4.5 | 10.0 / 8.5 / 7.0 / 5.0 |
| Air flow | Indoor | Heating (Hi/Me/Lo/Ulo) | 10.0 / 9.0 / 8.0 / 6.0 | 10.5 / 9.5 / 8.5 / 6.5 |
| | | Cooling/Heating | 27.4 / 23.6 | 31.5 / 27.8 |
| | Outdoor | Cooling/Heating | | |
| Available external static pressure | | Pa | 35(Initial static pressure with air filter : 5Pa) | |
| Exterior dimensions | Indoor | HeightxWidthxDepth | 200 x 750 x 500 | |
| | Outdoor | | 540 x 780(+62) x 290 | |
| Net weight | | Indoor / Outdoor | 20.5 / 31.0 | 20.5 / 34.5 |
| Refrigerant | | Type/GWP | R32 / 675 | |
| | | Charge | 0.62 / 0.419 | 0.78 / 0.527 |
| Refrigerant piping size | | Liquid/Gas | ø mm 6.35(1/4") / 9.52(3/8") | |
| Refrigerant line (one way) length[chargeless length] | | m | Max. 20 [15] | |
| Vertical height differences | | Outdoor is higher/lower | m Max. 10 / Max.10 | |
| Outdoor operating temperature range | Cooling | °CDB | -15~46 | |
| | Heating | | -15~24 | |
| Bottom air inlet kit (option) | | | UT-BAT1EF | |

* The data are measured under the following conditions(ISO-T1, H1). Cooling: Indoor temp. of 27°CDB, 19°CWB, and outdoor temp. of 35°CDB. Heating: Indoor temp. of 20°CDB, and outdoor temp. of 7°CDB, 6°CWB.
 * Sound level indicates the value in an anechoic chamber. During operation these values are somewhat higher due to ambient conditions.
 * 'tonne(s) of CO₂ equivalent' means a quantity of greenhouse gases- expressed as the product of the weight of the greenhouse gases in metric tonnes and of their global warming potential.