

FDUM

Indoor Unit
Duct Connected
-Low/Middle Static pressure-

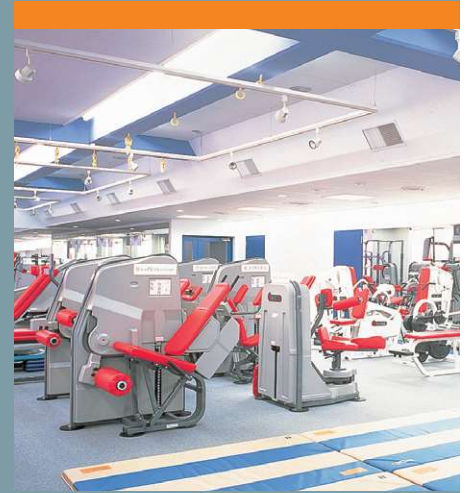


FDUM 40/50/60/71/100/125/140

Filter kit (option)



UM-FL1EF : for 40, 50
 UM-FL2EF : for 60, 71
 UM-FL3EF : for 100, 125, 140
 external static pressure loss:5Pa



- Energy Saving
- Automatic Operation
- Silent Operation
- Hi Power
- Weekly/Sleep/Peak-Cut Timer
- Self-Diagnostics



Remote control (option)

Wired			Wireless	
RC-EX3A RC-EXZ3A	RC-E5	RCH-E3	RCN-KIT4-E2	

*Not all functions available with all remote control options.

Thin Design

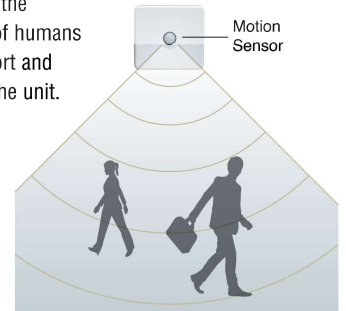
The height of all FDUM models is only 280mm.

FDUM100/125/140		FDUM40/50/60/71	
70mm less		19mm less	
H 350mm	H 280mm	H 299mm	H 280mm

Motion Sensor (Option)

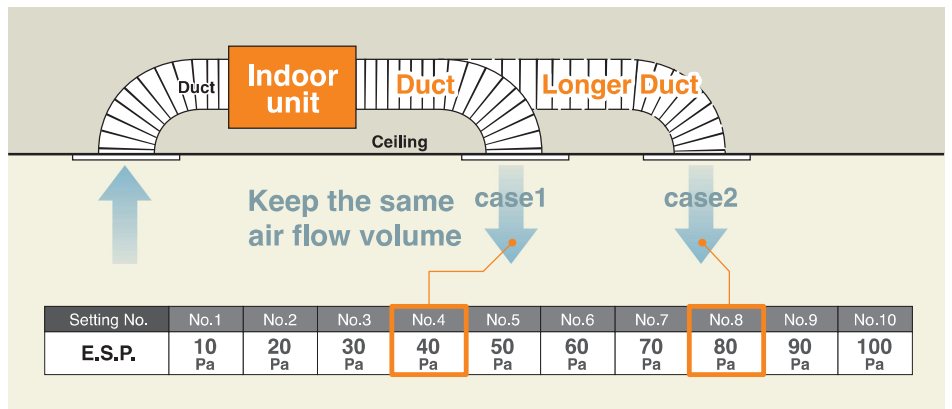
New

Motion sensor is equipped in the ceiling plane or wall plane and detects the presence/absence and activity of humans in a room to improve the comfort and energy saving performance of the unit.



Automatic External Static Pressure (E.S.P.) Control

Duct design was simplified.
 Using DC motor, the most optimum air flow volume can be achieved by this automatic control.
 Indoor unit will recognize external static pressure by itself automatically and keep rated air flow volume.



RC-E5
 E.S.P. button

External Static Pressure (E.S.P.) can be set by E.S.P. button.



Setting No.	No.1	No.2	No.3	No.4	No.5	No.6	No.7	No.8	No.9	No.10
E.S.P.	10 Pa	20 Pa	30 Pa	40 Pa	50 Pa	60 Pa	70 Pa	80 Pa	90 Pa	100 Pa

Zoning system

Effectively control temperatures of multiple rooms with one indoor duct unit. (Please refer to P51)

Improvement of the Serviceability

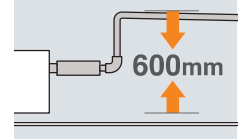
Fan unit (impeller and motor) can be pulled out from the right side of the unit. Maintenance can be carried out from the right side or the bottom side of the unit.

Transparent Inspection Window

Dirt condition of the bottom of a drain pan can be checked through this transparent inspection window without removing drain pan. (Please refer to P52)

Enhanced Installation Workability

600mm Drain Pump is mounted in all models. The indoor unit is completely hidden in the ceiling, so this is suitable for spaces with classy interior decoration.



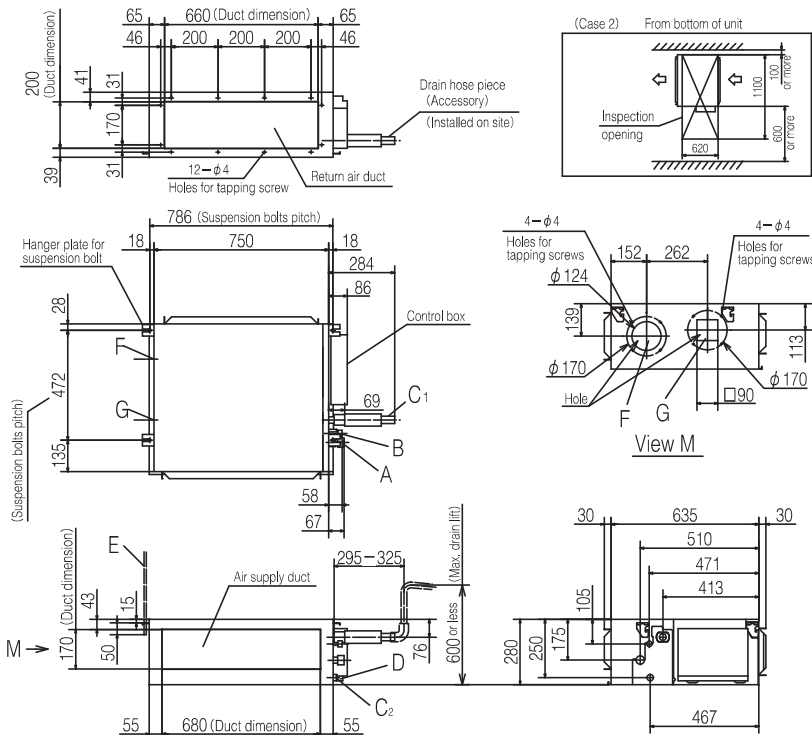
OUTDOOR UNIT

		Hyper Inverter		
SRC · FDC	Green	40~60ZSX-W1,-W2	71VNX-W	100~140VN(S)X-W
	Blue	40~60ZSX-S	71VNX	100~140VN(S)X
model				
Chargeless		15m	30m	
Height x Width x Depth (mm)		640 x 800(+71) x 290	750 x 880(+88) x 340	1,300 x 970 x 370

		Micro Inverter			Standard Inverter		
FDC	Green	100~140VN(S)A-W	—	200~250~280VSA-W	71VNP-W	90~100VNP-W	125VNP-W
	Blue	100~140VN(S)A	200VSA	250VSA	71VNP	90VNP1	100VNP
model							
Chargeless		30m			15m		
Height x Width x Depth (mm)		845 x 970 x 370	1,300 x 970 x 370	1,505 x 970 x 370	640 x 800(+71) x 290	750 x 880(+88) x 340	845 x 970 x 370

DIMENSIONS (Unit:mm) - FDUM -

Models FDUM40VH, 50VH

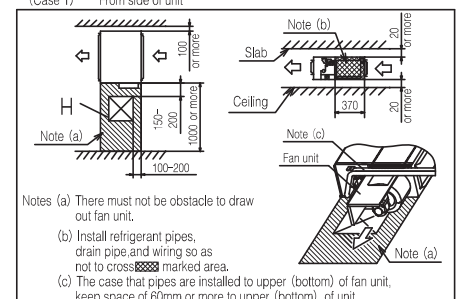


Symbol	Content
A	Gas piping (φ12.7(1/2") (Flare))
B	Liquid piping (φ6.35(1/4") (Flare))
C1	Drain piping (VP25 (O.D.32))
C2	Drain piping (Gravity drainage) (VP20)
D	Hole for wiring
E	Suspension bolts (M10)
F	Outside air opening for ducting (φ150) (Knock out)
G	Air outlet opening for ducting (φ125) (Knock out)
H	Inspection opening (450×450)

Note (1) The model name label is attached on the lid of the control box.

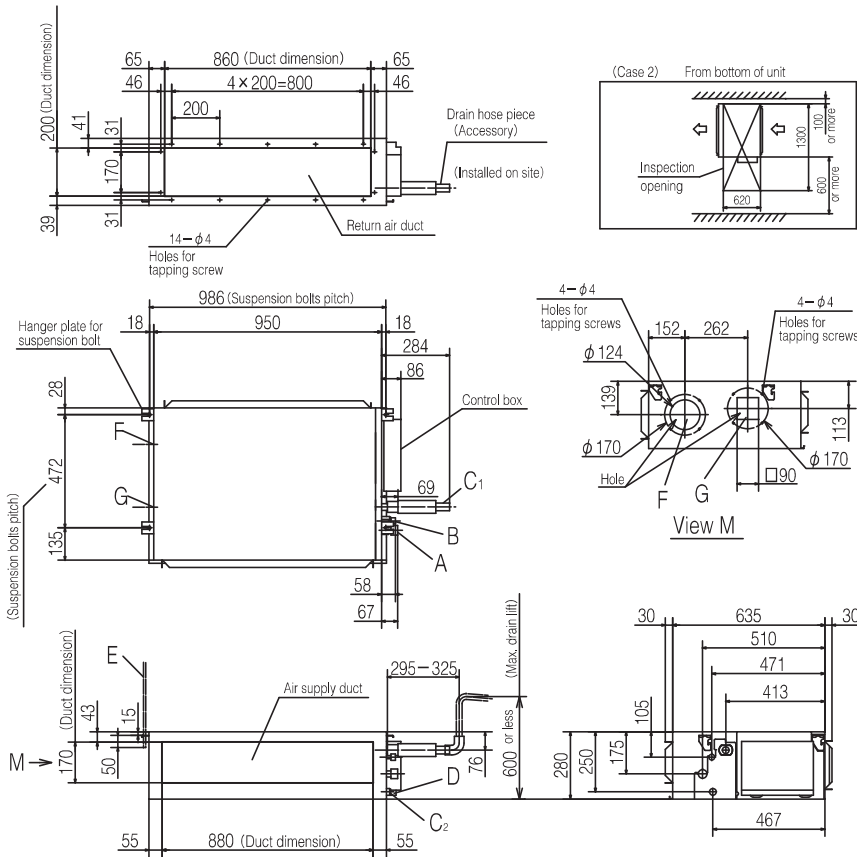
Space for installation and service

Select either of two cases to keep space for installation and services. (Case 1) From side of unit



DIMENSIONS (Unit:mm) - FDUM -

Models FDUM60VH,71VH



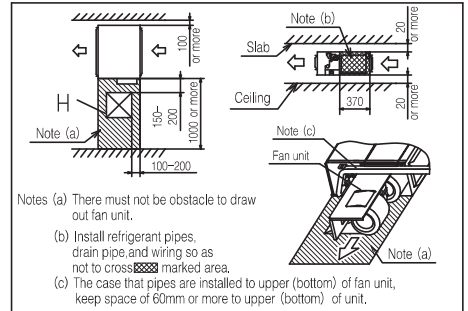
Symbol	Content	
	Model 60	71
A	Gas piping	$\phi 12.7 (1/2'')$ (Flare) $\phi 15.88 (5/8'')$ (Flare)
B	Liquid piping	$\phi 6.35 (1/4'')$ (Flare) $\phi 9.52 (3/8'')$ (Flare)
C1	Drain piping	VP25 (O.D.32)
C2	Drain piping (Gravity drainage)	VP20
D	Hole for wiring	
E	Suspension bolts	(M10)
F	Outside air opening for ducting	($\phi 150$) (Knock out)
G	Air outlet opening for ducting	($\phi 125$) (Knock out)
H	Inspection opening	(450x450)

Note (1) The model name label is attached on the lid of the control box.

Space for installation and service

Select either of two cases to keep space for installation and services.

(Case 1) From side of unit

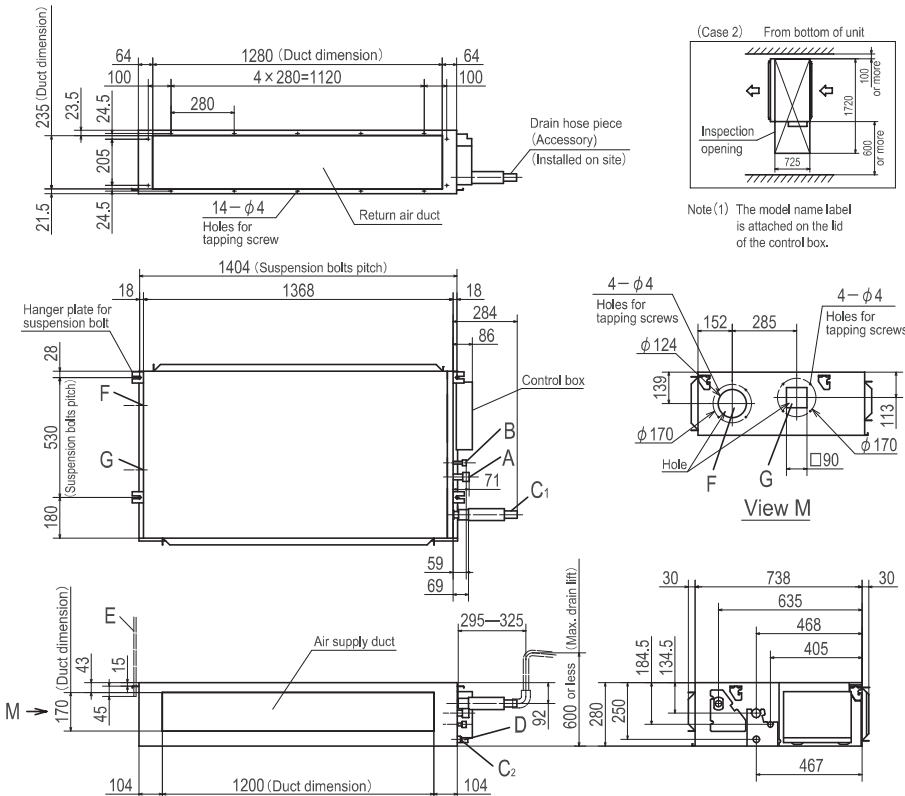


Notes (a) There must not be obstacle to draw out fan unit.

(b) Install refrigerant pipes, drain pipe, and wiring so as not to cross marked area.

(c) The case that pipes are installed to upper (bottom) of fan unit, keep space of 60mm or more to upper (bottom) of unit.

Models FDUM100VH,125VH,140VH



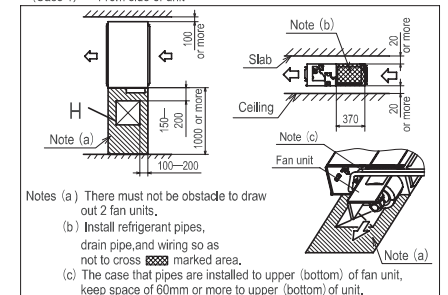
Note (1) The model name label is attached on the lid of the control box.

Symbol	Content	
A	Gas piping	$\phi 15.88 (5/8'')$ (Flare)
B	Liquid piping	$\phi 9.52 (3/8'')$ (Flare)
C1	Drain piping	VP25 (O.D.32)
C2	Drain piping (Gravity drainage)	VP20
D	Hole for wiring	
E	Suspension bolts	(M10)
F	Outside air opening for ducting	($\phi 150$) (Knock out)
G	Air outlet opening for ducting	($\phi 125$) (Knock out)
H	Inspection opening	(450x450)

Space for installation and service

Select either of two cases to keep space for installation and services.

(Case 1) From side of unit



Notes (a) There must not be obstacle to draw out 2 fan units.

(b) Install refrigerant pipes, drain pipe, and wiring so as not to cross marked area.

(c) The case that pipes are installed to upper (bottom) of fan unit, keep space of 60mm or more to upper (bottom) of unit.